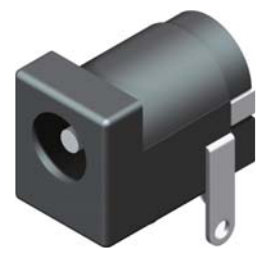
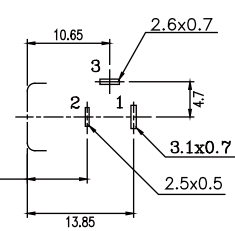
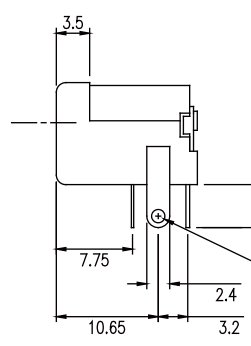
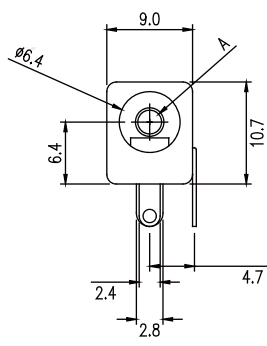
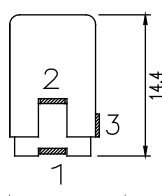




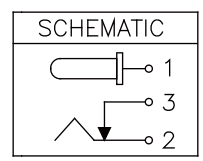
DC Jack Conn.



Recommended PCB Layout
(PCB TOLERANCE ± 0.05)

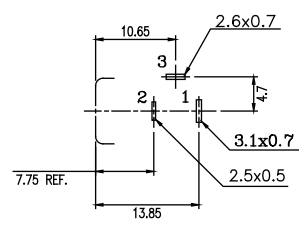
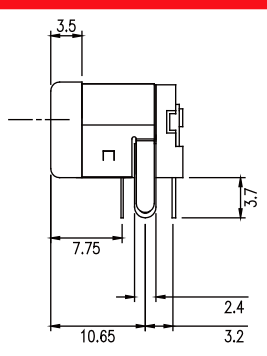
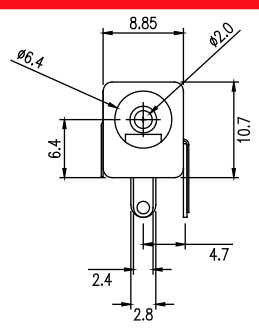


TERMINAL NUMBERS

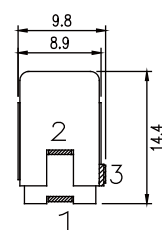


NO.	NAME	MATERIAL	FINISH
1	PIN TERM.	BRASS 0.4THK	TIN PLATED
2	SLEEVE TERM.	P.B.S 0.25THK	TIN PLATED
3	BREAK TERM.	BRASS 0.4THK	TIN PLATED
4	HOUSING	P.B.T	BLACK
5	CENTER PIN	BRASS $\phi 0.26$	NICKEL PLATED

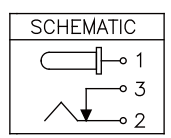
Part No.:DCJ **-0014TB-L**
 20: $\phi 2.0$
 25: $\phi 2.5$



Recommended PCB Layout
(PCB TOLERANCE ± 0.05)

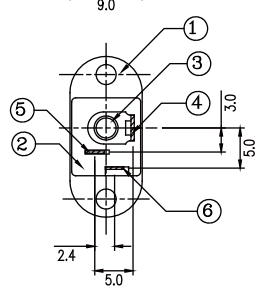
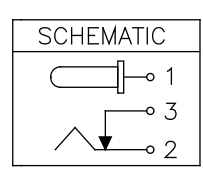
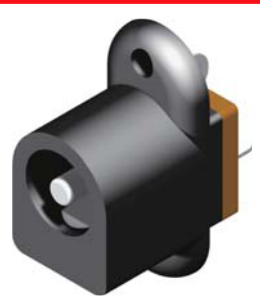
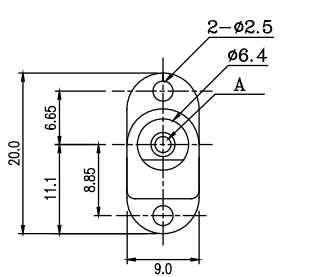
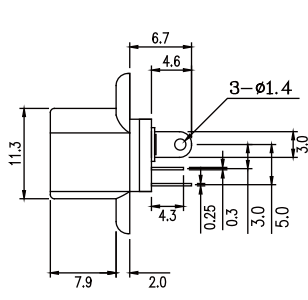


TERMINAL NUMBERS



NO.	NAME	MATERIAL	FINISH
1	PIN TERM.	BRASS 0.4THK	TIN PLATED
2	SLEEVE TERM.	P.B.S 0.25THK	TIN PLATED
3	BREAK TERM.	BRASS 0.4THK	TIN PLATED
4	HOUSING	P.B.T	BLACK
5	CENTER PIN	BRASS $\phi 0.2$	NICKEL PLATED
6	SHIELD SPERING	BRASS 0.2THK	NICKEL PLATED

Part No.:DCJ **S-0014TB-L**
 20: $\phi 2.0$
 25: $\phi 2.5$



Recommended PCB Layout
(PCB TOLERANCE ± 0.05)

NO.	NAME	MATERIAL	FINISH	Q'TY
1	HOUSING	P.B.T	BLACK	1
2	COVER	BAKELITE		1
3	PIN TERM.	BRASS 0.4THK	TIN PLATED	1
4	BREAK TERM.	BRASS	TIN PLATED	1
5	BREAK TERM.	PHOS. BORNZE T:0.25	TIN PLATED	1
6	CENTER PIN	COPPER ALLOY	NICKEL PLATED	1

Part No.:DCJ **D-0015TB-L**
 20: $\phi 2.0$
 25: $\phi 2.5$