

SLIM DB9 MALE CONNECTOR RIGHT ANGLE DIP TYPE

SPECIFICATIONS

Current Rating: 5 Ampere

Contact Resistance: 20mΩ Max. at DC 100mA

Insulation Resistance: 1000MΩ Min. at 500V DC

Withstanding Voltage: 1000V AC

Operating Temperature: -55°C to +125°C

Max Processing Temperature:

210°C for 30~60 Seconds

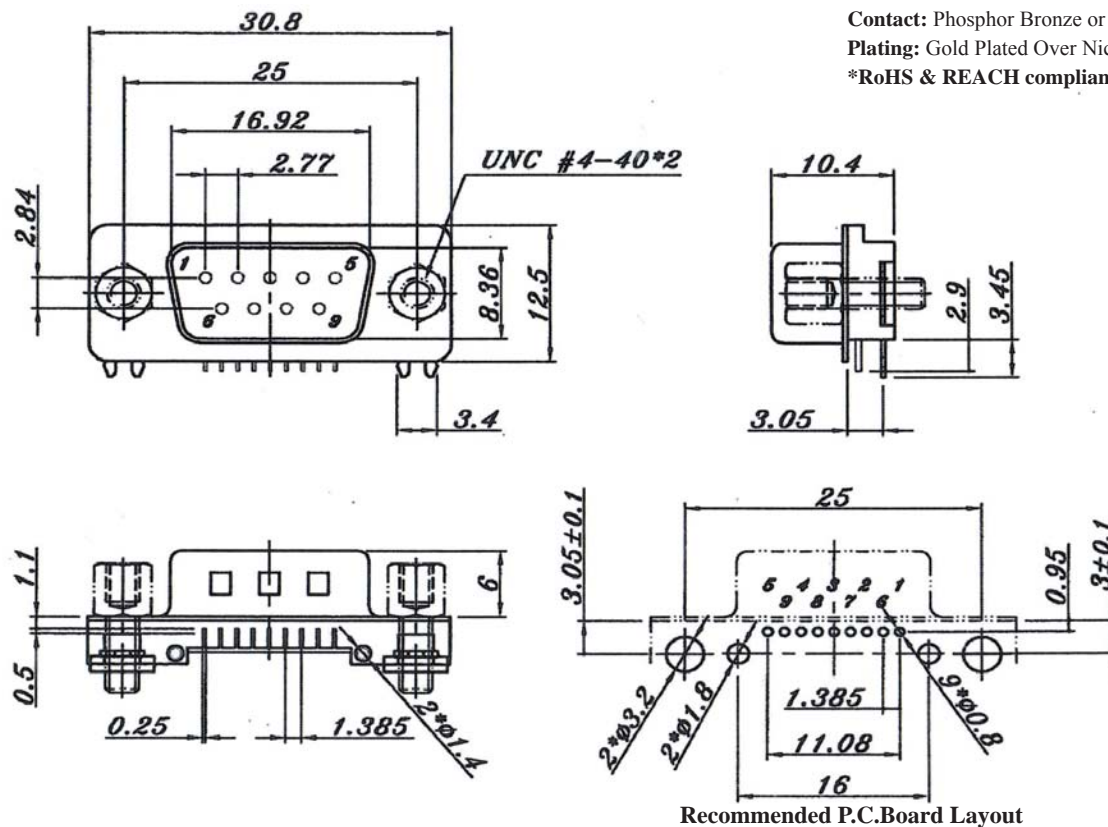
MATERIALS

Insulator: NY9T, UL94V-0

Contact: Phosphor Bronze or Brass

Plating: Gold Plated Over Nickel in Contact Area

*RoHS & REACH compliant.



ORDERING INFORMATION:

P/N 5 299 - DB09 RA / xx

1. CONNECTOR TYPE:

"299" MALE

2. NO. OF CONTACTS:

"DB09" DB9M

3. TERMINAL TYPE:

"RA" R/A DIP TYPE

4. FLANGE MOUNTING OPTION:

"N" #4-40UNC THREADED HOLES
WITHOUT HEX SCREW BOLTS

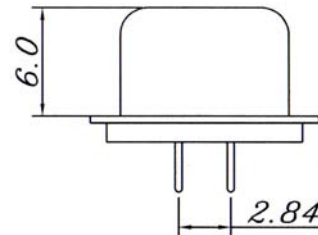
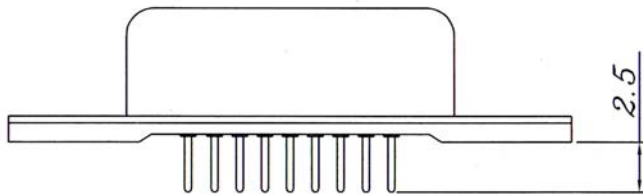
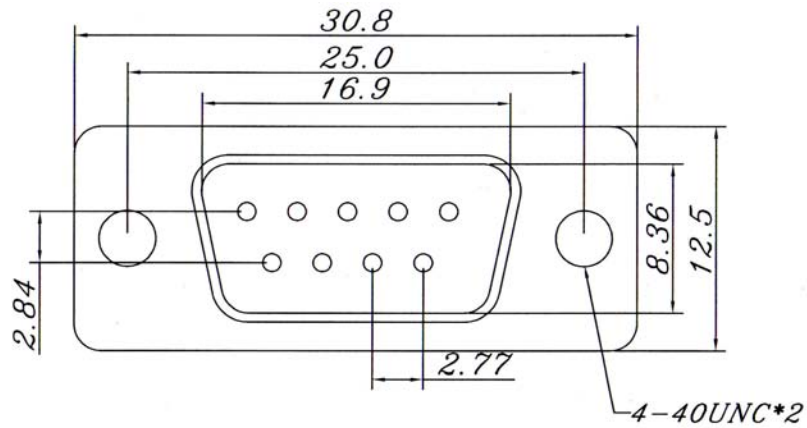
"NH" #4-40UNC THREADED HOLES
WITH BULK-PACKED (LOOSE)

#4-40UNC HEX SCREW BOLTS

"NJ" #4-40UNC THREADED HOLES
WITH INSTALLED (ASSEMBLED)

#4-40UNC HEX SCREW BOLTS

SLIM DB9 MALE CONNECTOR WITH MACHINED CONTACTS STRAIGHT PCB MOUNT TYPE



SPECIFICATIONS

Current Rating: 1.0 Ampere

Contact Resistance: 20mΩ Max. at DC 100mA

Insulation Resistance: 500MΩ Min. at 500V DC

Operating Temperature: -65°C to +125°C

Max Processing Temperature:

230°C for 30~60 Seconds

MATERIALS

Insulator: High Temperature Housing (UL94V-0)
IR and VPR Soldering Methods.

Contact: Phosphor Bronze

Plated: Selective Gold Plated

***RoHS & REACH compliant.**

ORDERING INFORMATION:

P/N 5₁ 299₂ - DB09₂ STR₃

1. CONNECTOR TYPE:

"299" MALE

2. NO. OF CONTACTS:

"DB09" DB9M MACHINED PINS

3. TERMINAL TYPE:

"STR" STRAIGHT DIP TYPE

SLIM DB9 MALE CONNECTOR RIGHT ANGLE SMT TYPE

SPECIFICATIONS

Current Rating: 5 Ampere

Contact Resistance: 20mΩ Max. at DC 100mA

Insulation Resistance: 1000MΩ Min. at 500V DC

Withstanding Voltage: 1000V AC

Operating Temperature: -55°C to +125°C

Max Processing Temperature:

230°C for 60 Seconds

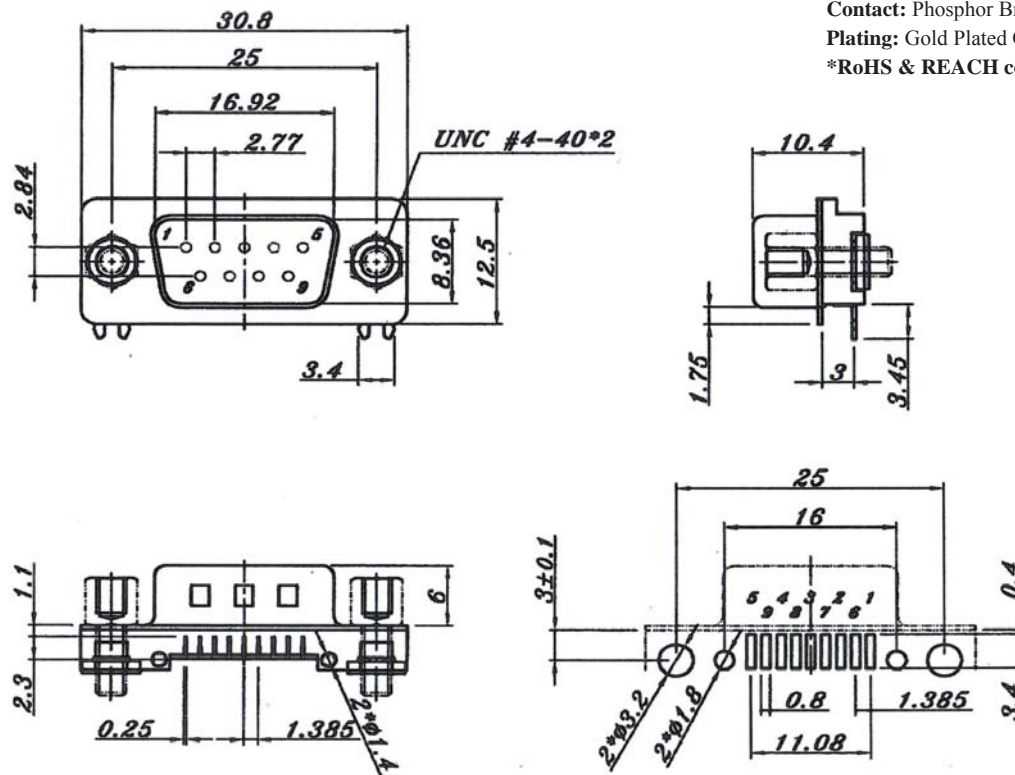
MATERIALS

Insulator: NY9T, UL94V-0

Contact: Phosphor Bronze or Brass

Plating: Gold Plated Over Nickel in Contact Area

*RoHS & REACH compliant.



Recommended P.C.Board Layout

ORDERING INFORMATION:

P/N 5 299 - DB09 SMT / XX

1. CONNECTOR TYPE:

"299" MALE

2. NO. OF CONTACTS:

"DB09" DB9M

3. TERMINAL TYPE:

"SMT" R/A SMT TYPE

4. FLANGE MOUNTING OPTION:

"N" #4-40UNC THREADED HOLES
WITHOUT HEX SCREW BOLTS

"NH" #4-40UNC THREADED HOLES
WITH BULK-PACKED (LOOSE)
#4-40UNC HEX SCREW BOLTS

"NJ" #4-40UNC THREADED HOLES
WITH INSTALLED (ASSEMBLED)
#4-40UNC HEX SCREW BOLTS