

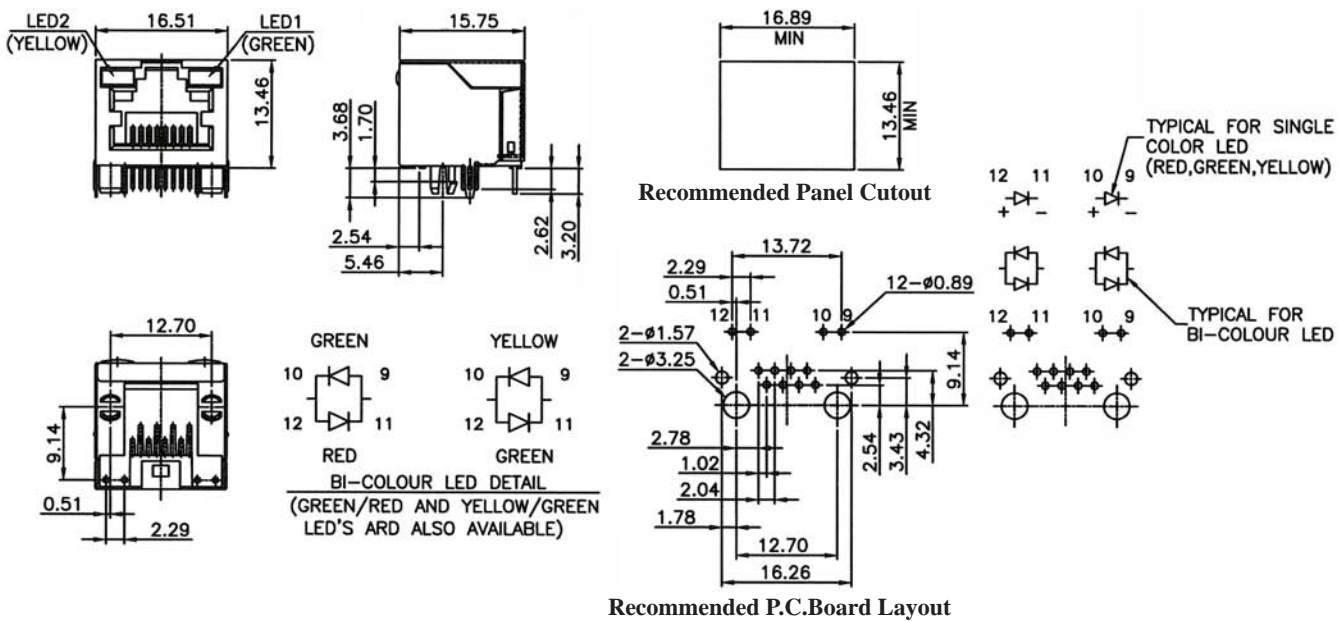
SIDE ENTRY UP LATCH MODULAR PCB JACK WITH LED 8P PROFILE=13.46MM (FULLY SHIELDED)

SPECIFICATIONS

Insulation Resistance: 500MΩ Min.
Contact Resistance: 20mΩ Max.
Rating Current: 1.5A Max.
Rating Voltage: 120V AC.
Dielectric Voltage: 1000 Vrms 60 Sec. Min.
Temperature Range: -40°C / +85°C
Durability: 500 Mating cycles Min.

MATERIALS

Housing: PBT Glass Filled (UL 94V-0)
Soldering Temperature: 235°C
Color: Black
Spring Wire: Phosphor Bronze
 Gold plating Over Nickel
Shield: Brass plating Nickel Alloy
All materials must be RoHS compliant.



ORDERING INFORMATION:

P/N M J 3 B - $\frac{88}{1} \times \frac{B}{2} \times \frac{01}{345}$

- NO. OF POSITIONS & CONTACTS:
"88" 8P8C
- CONTACT FINISH:
"A" 6 MICROINCH GOLD
"B" 15 MICROINCH GOLD
"C" 30 MICROINCH GOLD
"D" 50 MICROINCH GOLD
- CODE OF LED1 DESIGNATION:
N, Y, R, X, 3, 4, 5, 6, 9, 0
- CODE OF LED2 DESIGNATION:
N, Y, R, X, 3, 4, 5, 6, 9, 0
- NO. OF PORTS:
01

| LED Designation: | | | | | |
|------------------|---------|---------|------|---------|---------|
| Code | Forward | Reverse | Code | Forward | Reverse |
| N | Green | ——— | 4 | Yellow | Red |
| Y | Yellow | ——— | 5 | Green | Yellow |
| R | Red | ——— | 6 | Yellow | Green |
| 1 | Green | Orange | 9 | Red | Green |
| 3 | Green | Red | 0 | Red | Yellow |
| X | ——— | ——— | 8 | Orange | ——— |

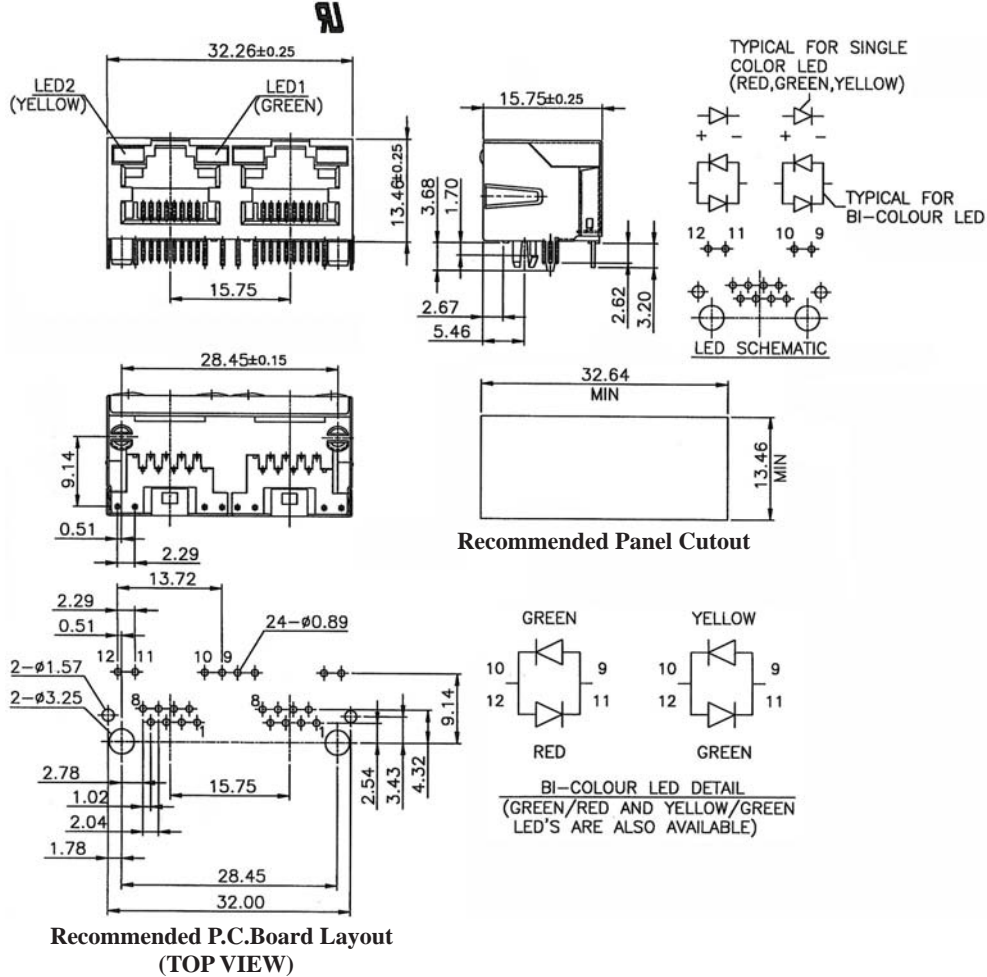
SIDE ENTRY 2-PORT UP LATCH MODULAR PCB JACK WITH LED 8P PROFILE=13.46MM (FULLY SHIELDED)

SPECIFICATIONS

Insulation Resistance: 500MΩ Min.
Contact Resistance: 20mΩ Max.
Rating Current: 1.5A Max.
Rating Voltage: 120V AC.
Dielectric Voltage: 1000 Vrms 60 Sec. Min.
Temperature Range: -40°C / +85°C
Durability: 500 Mating cycles Min.

MATERIALS

Housing: PBT Glass Filled (UL 94V-0)
Soldering Temperature: 235°C
Color: Black
Spring Wire: Phosphor Bronze
 Gold plating Over Nickel
Shield: Brass plating Nickel Alloy
All materials must be RoHS compliant.



ORDERING INFORMATION:

P/N M J 3 B - $\frac{88}{1} \times \frac{B}{2} \times \frac{02}{345}$

- NO. OF POSITIONS & CONTACTS:
"88" 8P8C
- CONTACT FINISH:
"A" 6 MICROINCH GOLD
"B" 15 MICROINCH GOLD
"C" 30 MICROINCH GOLD
"D" 50 MICROINCH GOLD
- CODE OF LED1 DESIGNATION:
N, Y, R, X, 3, 4, 5, 6, 9, 0
- CODE OF LED2 DESIGNATION:
N, Y, R, X, 3, 4, 5, 6, 9, 0
- NO. OF PORTS:
02

| LED Designation: | | | | | |
|------------------|---------|---------|------|---------|---------|
| Code | Forward | Reverse | Code | Forward | Reverse |
| N | Green | ——— | 4 | Yellow | Red |
| Y | Yellow | ——— | 5 | Green | Yellow |
| R | Red | ——— | 6 | Yellow | Green |
| 1 | Green | Orange | 9 | Red | Green |
| 3 | Green | Red | 0 | Red | Yellow |
| X | ——— | ——— | 8 | Orange | ——— |

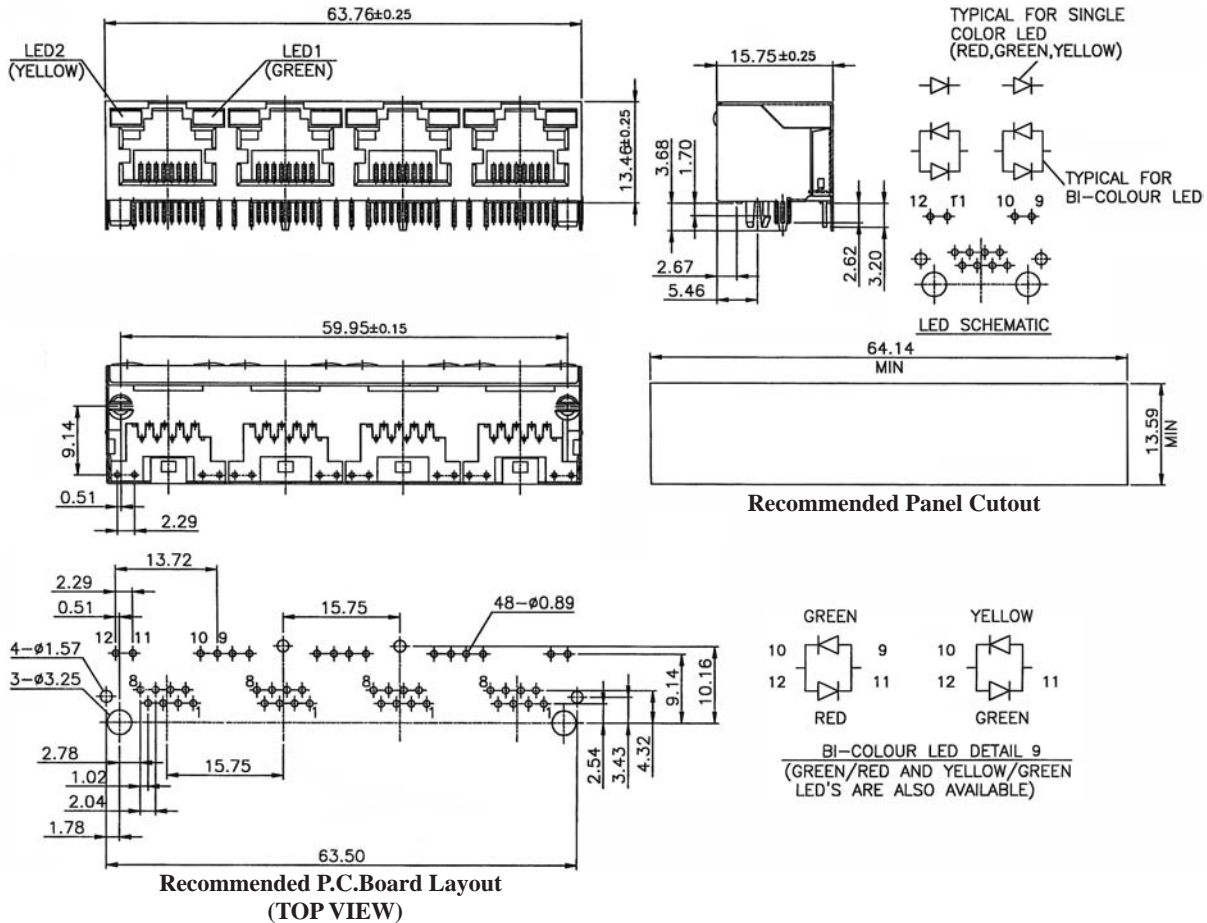
SIDE ENTRY 4-PORT UP LATCH MODULAR PCB JACK WITH LED 8P PROFILE=13.46MM (FULLY SHIELDED)

SPECIFICATIONS

Insulation Resistance: 500MΩ Min.
 Contact Resistance: 20mΩ Max.
 Rating Current: 1.5A Max.
 Rating Voltage: 120V AC.
 Dielectric Voltage: 1000 Vrms 60 Sec. Min.
 Temperature Range: -40°C / +85°C
 Durability: 500 Mating cycles Min.

MATERIALS

Housing: PBT Glass Filled (UL 94V-0)
 Soldering Temperature: 235°C
 Color: Black
 Spring Wire: Phosphor Bronze
 Gold plating Over Nickel
 Shield: Brass plating Nickel Alloy
 All materials must be RoHS compliant.



ORDERING INFORMATION:

P/N MJ3B - $\frac{88}{1} \times \frac{B}{2} \times \frac{04}{345}$

- NO. OF POSITIONS & CONTACTS:
"88" 8P8C
- CONTACT FINISH:
"A" 6 MICROINCH GOLD
"B" 15 MICROINCH GOLD
"C" 30 MICROINCH GOLD
"D" 50 MICROINCH GOLD
- CODE OF LED1 DESIGNATION:
N, Y, R, X, 3, 4, 5, 6, 9, 0
- CODE OF LED2 DESIGNATION:
N, Y, R, X, 3, 4, 5, 6, 9, 0
- NO. OF PORTS:
04

NOTE: P/N MJ3BHT-88xBxx04 for High Temp. Version

| LED Designation: | | | | | |
|------------------|---------|---------|------|---------|---------|
| Code | Forward | Reverse | Code | Forward | Reverse |
| N | Green | ——— | 4 | Yellow | Red |
| Y | Yellow | ——— | 5 | Green | Yellow |
| R | Red | ——— | 6 | Yellow | Green |
| 1 | Green | Orange | 9 | Red | Green |
| 3 | Green | Red | 0 | Red | Yellow |
| X | ——— | ——— | 8 | Orange | ——— |