

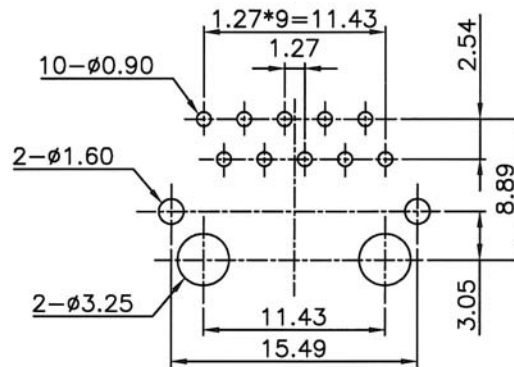
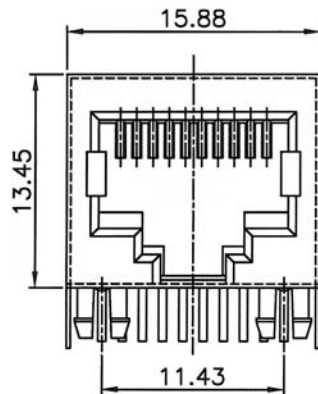
## SIDE ENTRY MODULAR PCB JACK 10P PROFILE=13.65MM (FULLY SHIELDED)

### SPECIFICATIONS

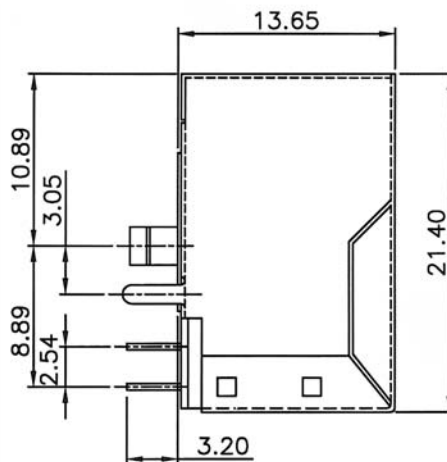
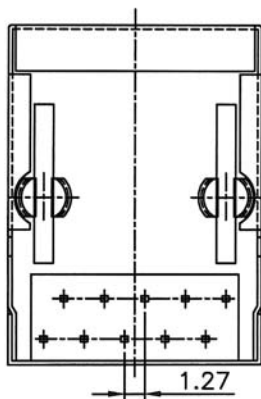
**Insulation Resistance:** 500MΩ Min.  
**Contact Resistance:** 20mΩ Max.  
**Rating Current:** 1.5A Max.  
**Rating Voltage:** 120V AC.  
**Dielectric Voltage:** 1000 Vrms 60 Sec. Min.  
**Temperature Range:** -40°C / +85°C  
**Durability:** 500 Mating cycles Min.

### MATERIALS

**Housing:** PBT Glass Filled (UL 94V-0)  
**Soldering Temperature:** 235°C  
**Color:** Black  
**Spring Wire:** Phosphor Bronze  
                   Gold plating Over Nickel  
**Shield:** Brass plating Nickel Alloy  
**All materials must be RoHS compliant.**



Recommended P.C. Board Layout  
(TOP VIEW)



### ORDERING INFORMATION:

P/N M J 8 V -  $\frac{x}{T} \frac{x}{2} B$

1. NO. OF POSITIONS & CONTACTS:  
 "00" 10P10C  
 "08" 10P8C
2. CONTACT FINISH:  
 "A" 6 MICROINCH GOLD  
 "B" 15 MICROINCH GOLD  
 "C" 30 MICROINCH GOLD  
 "D" 50 MICROINCH GOLD

NOTE: GROUNDING PIN SPACING= 3.05MM BEHIND PEG