

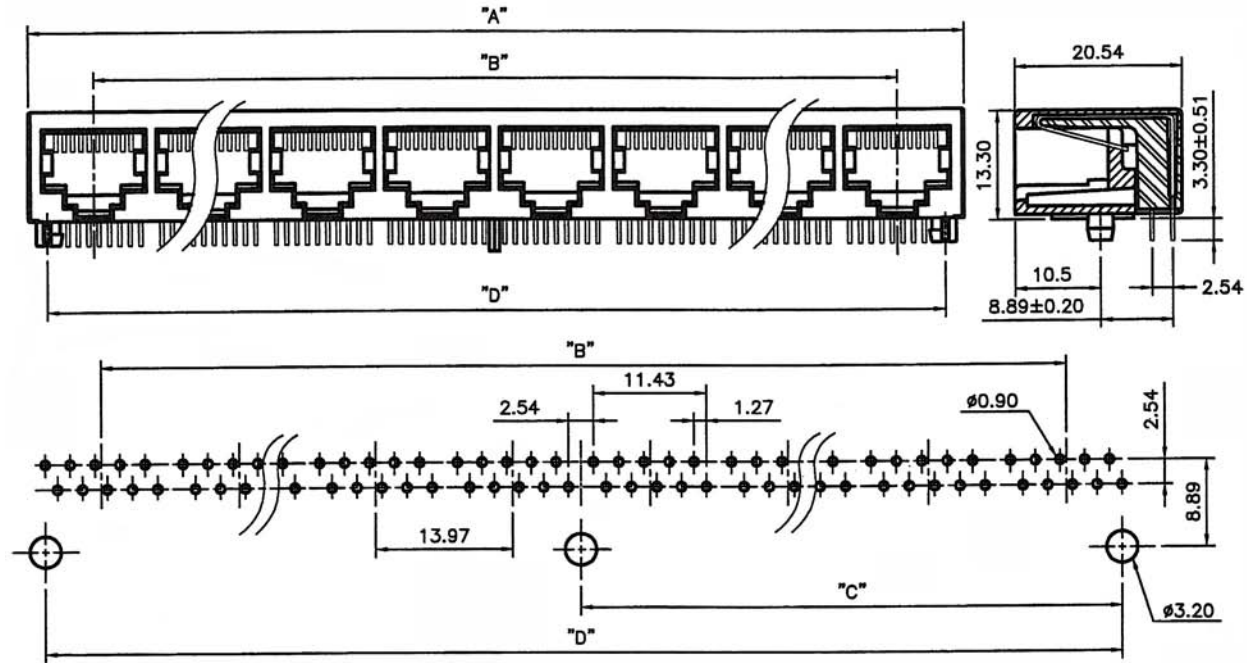
SIDE ENTRY MULTI-PORT MODULAR PCB JACK 10P PROFILE=13.30MM (UNSHIELDED)

SPECIFICATIONS

Insulation Resistance: 500MΩ Min.
Contact Resistance: 20mΩ Max.
Rating Current: 1.5A Max.
Rating Voltage: 120V AC.
Dielectric Voltage: 1000 Vrms 60 Sec. Min.
Temperature Range: -40°C / +85°C
Durability: 500 Mating cycles Min.

MATERIALS

Housing: PBT Glass Filled (UL 94V-0)
Soldering Temperature: 235°C
Color: Black
Spring Wire: Phosphor Bronze
 Gold plating Over Nickel
All materials must be RoHS compliant.



Recommended P.C.Board Layout

No. of Ports	DIM "A" ± 0.25	DIM "B" ± 0.20	DIM "C" ± 0.10	DIM "D" ± 0.15
02	30.48	13.97	-	25.40
04	58.42	41.91	-	53.34
06	86.36	69.85	-	81.28
08	114.30	97.79	54.61	109.22
10	142.24	125.73	68.58	137.16

ORDERING INFORMATION:

P/N MJ6Y - $\frac{x}{1} \frac{x}{2} \frac{x}{3} B \frac{x}{3}$

- NO. OF POSITIONS & CONTACTS:
 "00" 10P10C
 "08" 10P8C
- CONTACT FINISH:
 "A" 6 MICROINCH GOLD
 "B" 15 MICROINCH GOLD
 "C" 30 MICROINCH GOLD
 "D" 50 MICROINCH GOLD
- NO. OF PORTS:
 02, 04, 06, 08, 10