

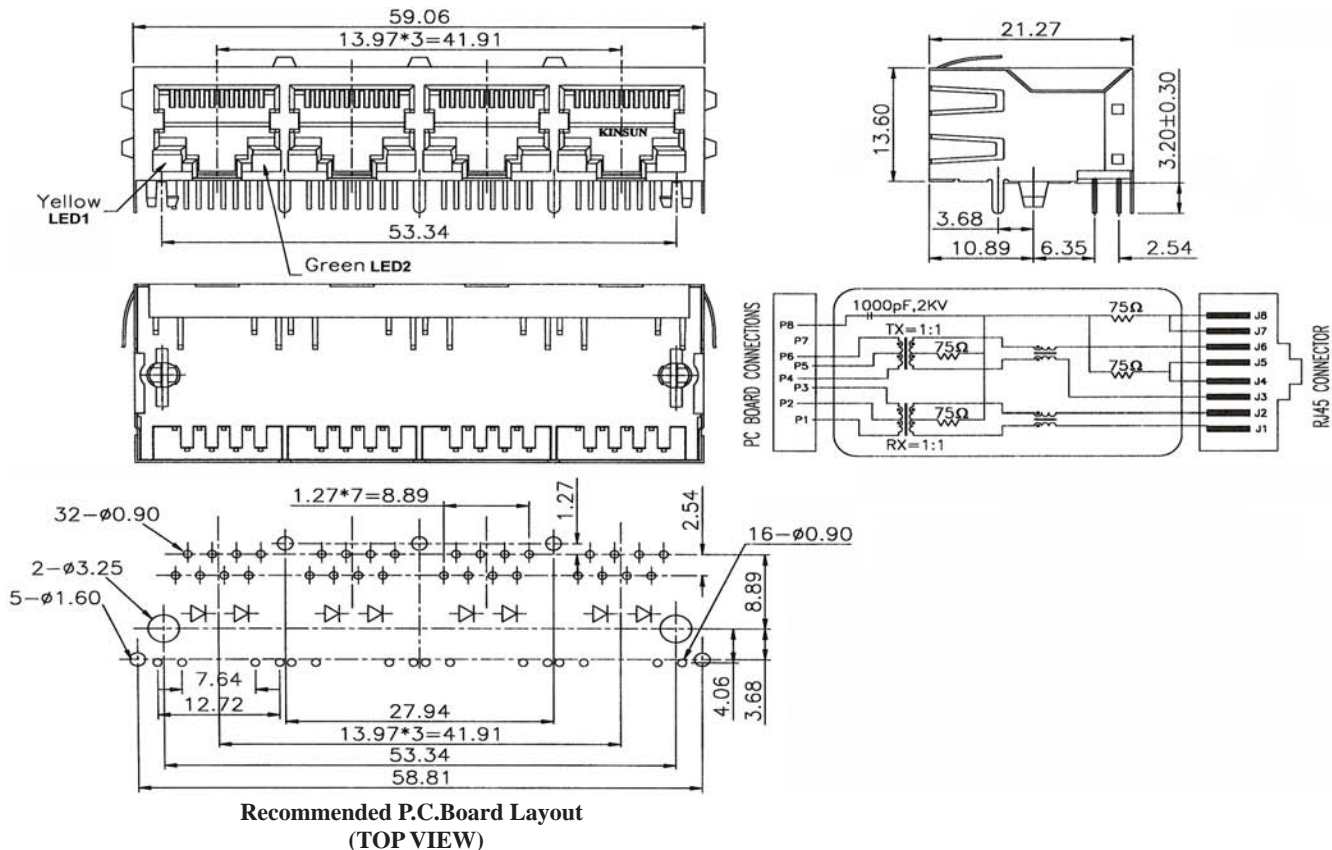
## SIDE ENTRY 4-PORT MAGNETIC 10/100 BASE-T JACK WITH LED 8P (FULLY SHIELDED)

### SPECIFICATIONS

**Insulation Resistance:** 500MΩ Min.  
**Contact Resistance:** 20mΩ Max.  
**Rating Current:** 1.5A Max.  
**Rating Voltage:** 120V AC.  
**Dielectric Voltage:** 1000 Vrms 60 Sec. Min.  
**Temperature Range:** -40°C / +85°C  
**Durability:** 500 Mating cycles Min.

### MATERIALS

**Housing:** Nylon (UL 94V-0)  
**Soldering Temperature:** 260°C  
**Color:** Black  
**Spring Wire:** Phosphor Bronze  
 Gold plating Over Nickel  
**All materials must be RoHS compliant.**



### ORDERING INFORMATION:

P/N M J M 4 - 8 8 x B 0 2 x x 0 4

1 2 3 4 5

1. NO. OF POSITIONS & CONTACTS:  
"88" 8P8C
2. CONTACT FINISH:  
"A" 6 MICROINCH GOLD  
"B" 15 MICROINCH GOLD  
"C" 30 MICROINCH GOLD  
"D" 50 MICROINCH GOLD
3. MAGNETIC SCHEMATICS:  
02

4. COLORS OF LED:  
"NN" LED1: GREEN & LED2: GREEN  
"NY" LED1: GREEN & LED2: YELLOW  
"YN" LED1: YELLOW & LED2: GREEN  
"YY" LED1: YELLOW & LED2: YELLOW  
"XX" W/O LED
5. NO. OF PORTS:  
04

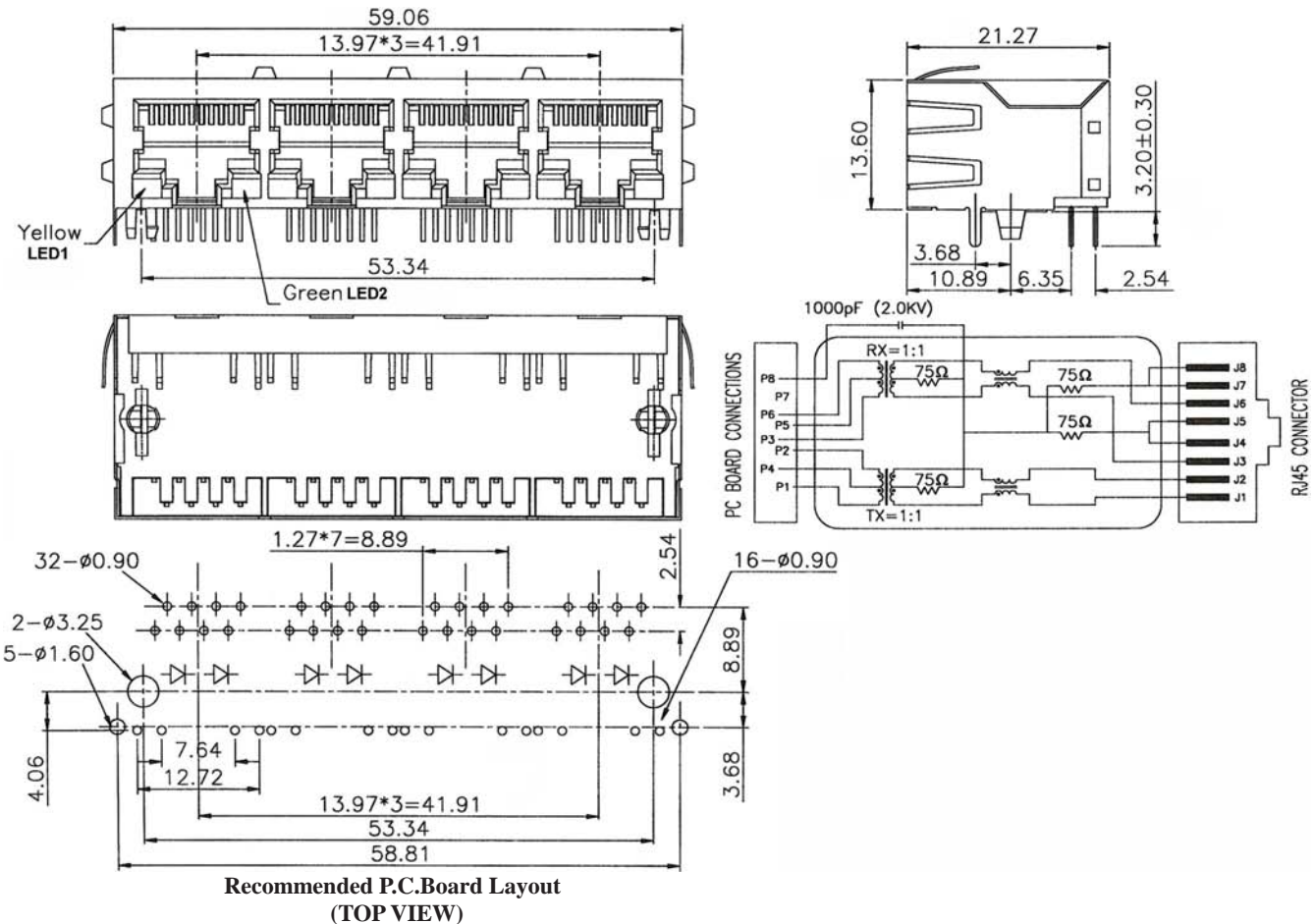
## SIDE ENTRY 4-PORT MAGNETIC 10/100 BASE-T JACK WITH LED 8P (FULLY SHIELDED)

### SPECIFICATIONS

**Insulation Resistance:** 500MΩ Min.  
**Contact Resistance:** 20mΩ Max.  
**Rating Current:** 1.5A Max.  
**Rating Voltage:** 120V AC.  
**Dielectric Voltage:** 1000 Vrms 60 Sec. Min.  
**Temperature Range:** -40°C / +85°C  
**Durability:** 500 Mating cycles Min.

### MATERIALS

**Housing:** Nylon (UL 94V-0)  
**Soldering Temperature:** 260°C  
**Color:** Black  
**Spring Wire:** Phosphor Bronze  
 Gold plating Over Nickel  
**All materials must be RoHS compliant.**



### ORDERING INFORMATION:

**P/N M J M 4 - 8 8 x B 0 6 x x 0 4**  
1 2 3 4 5

1. NO. OF POSITIONS & CONTACTS:  
"88" 8P8C
2. CONTACT FINISH:  
"A" 6 MICROINCH GOLD  
"B" 15 MICROINCH GOLD  
"C" 30 MICROINCH GOLD  
"D" 50 MICROINCH GOLD
3. MAGNETIC SCHEMATICS:  
06

4. COLORS OF LED:  
"NN" LED1: GREEN & LED2: GREEN  
"NY" LED1: GREEN & LED2: YELLOW  
"YN" LED1: YELLOW & LED2: GREEN  
"YY" LED1: YELLOW & LED2: YELLOW  
"XX" W/O LED
5. NO. OF PORTS:  
04