

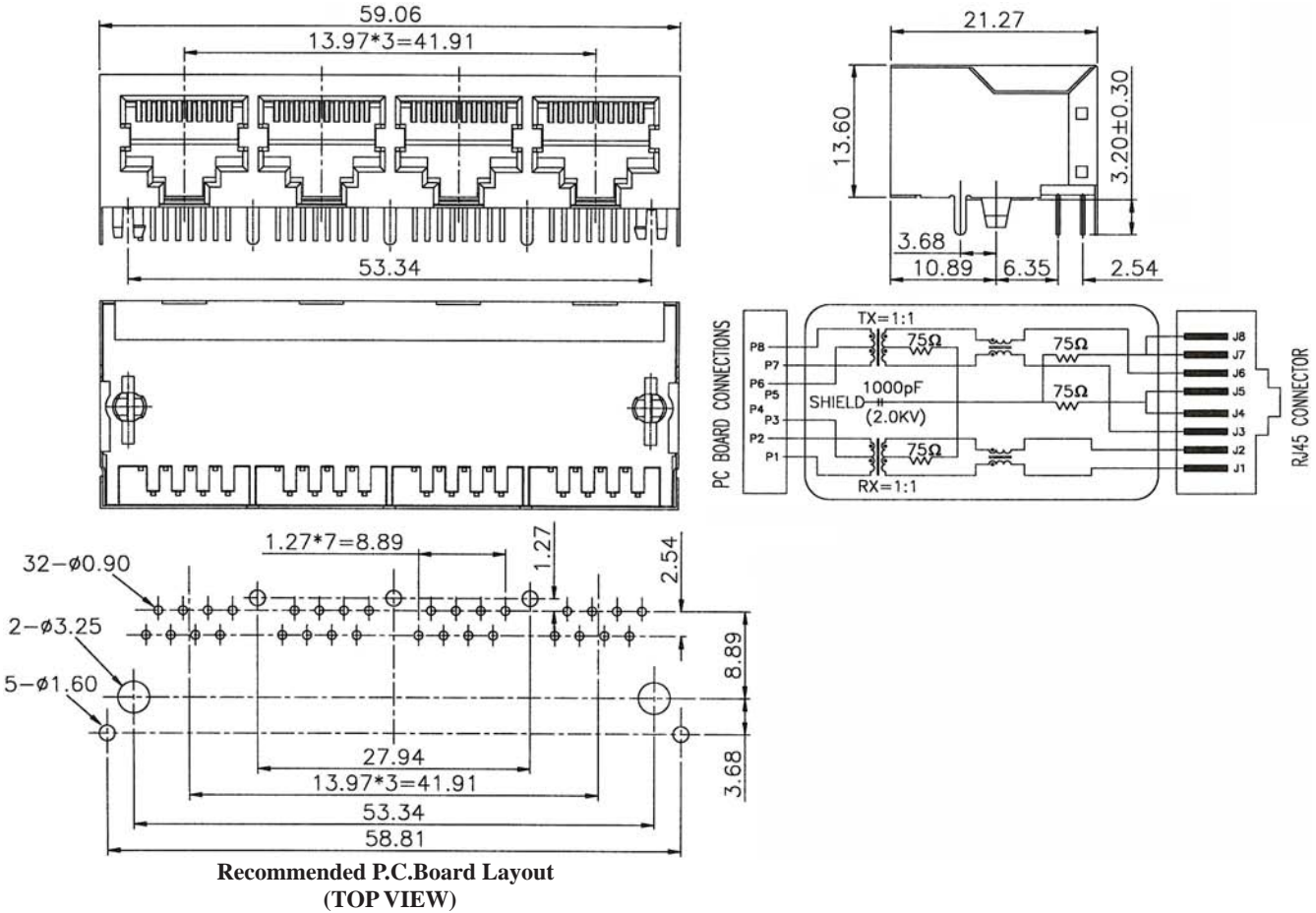
## SIDE ENTRY 4-PORT MAGNETIC 10/100 BASE-T JACK WITH LED 8P (FULLY SHIELDED)

### SPECIFICATIONS

**Insulation Resistance:** 500MΩ Min.  
**Contact Resistance:** 20mΩ Max.  
**Rating Current:** 1.5A Max.  
**Rating Voltage:** 120V AC.  
**Dielectric Voltage:** 1000 Vrms 60 Sec. Min.  
**Temperature Range:** -40°C / +85°C  
**Durability:** 500 Mating cycles Min.

### MATERIALS

**Housing:** Nylon (UL 94V-0)  
**Soldering Temperature:** 260°C  
**Color:** Black  
**Spring Wire:** Phosphor Bronze  
 Gold plating Over Nickel  
**All materials must be RoHS compliant.**



### ORDERING INFORMATION:

**P/N M J M 7 - 8 8 x B 0 1 x x 0 4**  
 1 2 3 4 5

- |   |  |
|---|--|
| <p>1. NO. OF POSITIONS &amp; CONTACTS:<br/>"88" 8P8C</p> <p>2. CONTACT FINISH:<br/>"A" 6 MICROINCH GOLD<br/>"B" 15 MICROINCH GOLD<br/>"C" 30 MICROINCH GOLD<br/>"D" 50 MICROINCH GOLD</p> <p>3. MAGNETIC SCHEMATICS:<br/>01</p> | <p>4. COLORS OF LED:<br/>"NN" LED1: GREEN &amp; LED2: GREEN<br/>"NY" LED1: GREEN &amp; LED2: YELLOW<br/>"YN" LED1: YELLOW &amp; LED2: GREEN<br/>"YY" LED1: YELLOW &amp; LED2: YELLOW<br/>"XX" W/O LED</p> <p>5. NO. OF PORTS:<br/>04</p> |
|---|--|