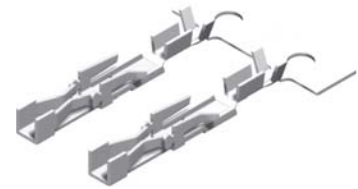
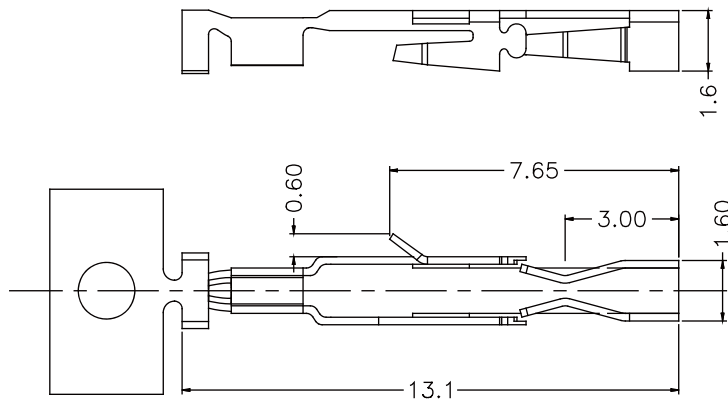




2.54mm Terminal / Housing



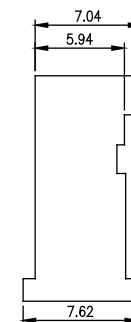
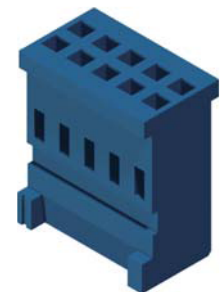
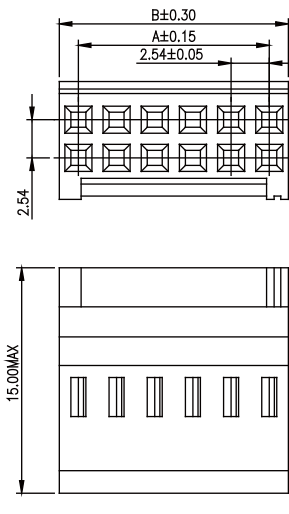
Part No.:2217-T-L

Thickness	Material	Finish	Wire Range	Insulation O.D
0.20	Phosphor / Brass	Tin-Plated	AWG#22~#28	1.5mm(Max.)

Specifications

Current Rating: 3A AC,DC
 Voltage Rating: 250V AC,DC
 Temperature Range: -25°C to +85°C
 Contact Resistance: 20mΩ Max
 Insulation Resistance: 1000MΩ Min
 Withstanding Voltage: 1000V AC/minute
 Material: Nylon 66,UL94V-0

Part No.	Dimension	
	A	B
2217H-202U-L	2.54	5.08
2217H-203U-L	5.08	7.62
2217H-204U-L	7.62	10.16
2217H-205U-L	10.16	12.70
2217H-206U-L	12.70	15.24
2217H-207U-L	15.24	17.78
2217H-208U-L	17.78	20.32
2217H-209U-L	20.32	22.86
2217H-210U-L	22.86	25.40
2217H-211U-L	25.40	27.94
2217H-212U-L	27.94	30.48
2217H-213U-L	30.48	33.02
2217H-214U-L	33.02	35.56
2217H-215U-L	35.56	38.10
2217H-216U-L	38.10	40.64
2217H-217U-L	40.64	43.18
2217H-218U-L	43.18	45.72
2217H-219U-L	45.72	48.26
2217H-220U-L	48.26	50.80

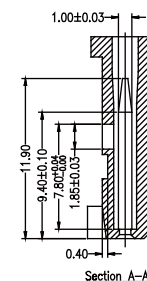
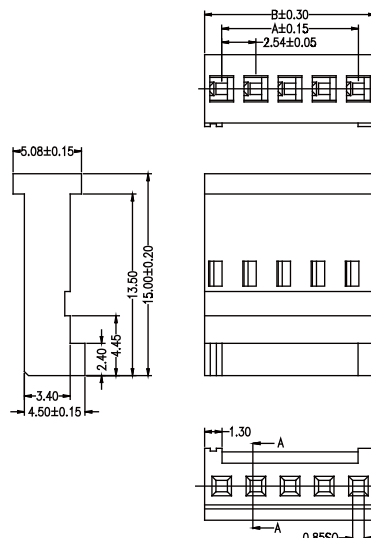


Part No.:2217H-2XXU-L

Specifications

Current Rating: 3A AC,DC
 Voltage Rating: 250V AC,DC
 Temperature Range: -25°C to +85°C
 Contact Resistance: 20mΩ Max
 Insulation Resistance: 1000MΩ Min
 Withstanding Voltage: 1000V AC/minute
 Material: Nylon 66,UL94V-0

Part No.	Dimension	
	A	B
2217H-103U-L	5.08	7.62
2217H-104U-L	7.62	10.16
2217H-105U-L	10.16	12.70
2217H-106U-L	12.70	15.24
2217H-107U-L	15.24	17.78
2217H-108U-L	17.78	20.32
2217H-109U-L	20.32	22.86
2217H-110U-L	22.86	25.40
2217H-112U-L	27.94	30.48
2217H-115U-L	35.56	38.10
2217H-118U-L	43.18	45.72
2217H-120U-L	48.26	50.80



Part No.:2217H-1XXU-L

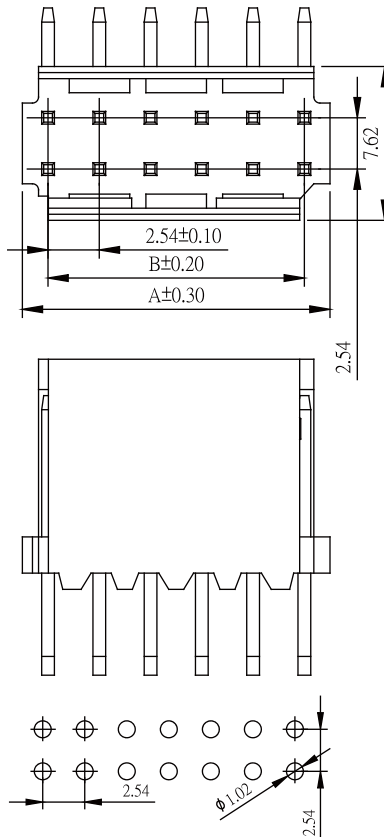


2.54mm Wafer Right Angle Type

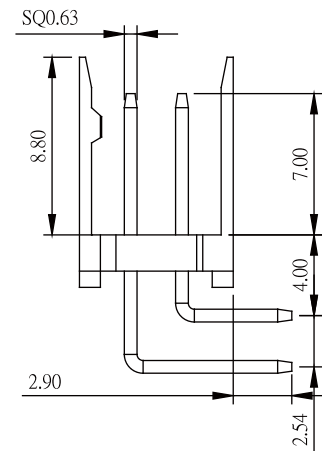
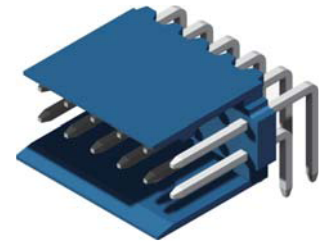
Specifications

Current Rating: 3A AC,DC
 Voltage Rating: 250V AC,DC
 Temperature Range: -25°C to +105°C
 Contact Resistance: 20mΩ Max.
 Insulation Resistance: 1000MΩ Min.
 Withstanding Voltage: 1000V AC/minute
 Terminal: Brass / Gold or Tin Plated
 Material: Nylon 66,UL94V-0

Part No.	Dimensions	
	A	B
2217R-202TU-L	5.08	2.54
2217R-203TU-L	7.62	5.08
2217R-204TU-L	10.16	7.62
2217R-205TU-L	12.70	10.16
2217R-206TU-L	15.24	12.70
2217R-207TU-L	17.78	15.24
2217R-208TU-L	20.32	17.78
2217R-209TU-L	22.86	20.32
2217R-210TU-L	25.40	22.86
2217R-211TU-L	27.94	25.40
2217R-212TU-L	30.48	27.94
2217R-213TU-L	33.02	30.48
2217R-214TU-L	35.56	33.02
2217R-215TU-L	38.10	35.56
2217R-216TU-L	40.64	38.10
2217R-217TU-L	43.18	40.64
2217R-218TU-L	45.72	43.18
2217R-219TU-L	48.26	45.72
2217R-220TU-L	50.80	48.26



Recommended P.C.B Layout(Top Side)
 (PCB BOARD TOLERANCE±0.05)

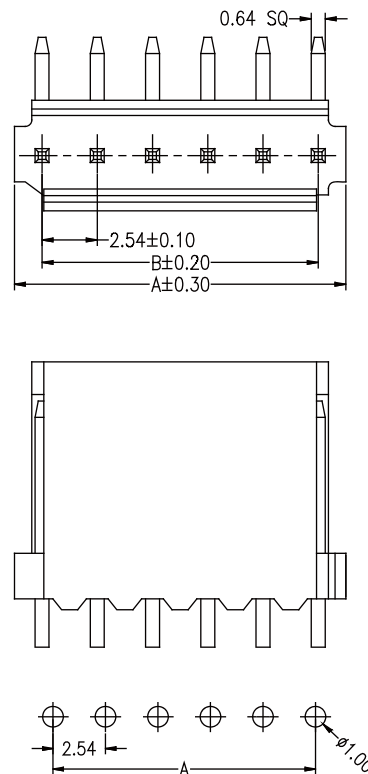


Part No.:2217R-2XXTU-L

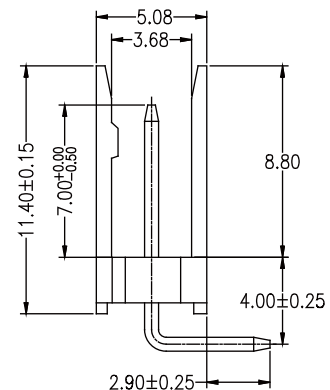
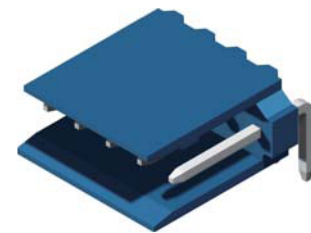
Specifications

Current Rating: 3A AC,DC
 Voltage Rating: 250V AC,DC
 Temperature Range: -25°C to +105°C
 Contact Resistance: 20mΩ Max.
 Insulation Resistance: 1000MΩ Min.
 Withstanding Voltage: 1000V AC/minute
 Terminal: Brass / Gold or Tin Plated
 Material: Nylon 66,UL94V-0

Part No.	Dimensions	
	A	B
2217R-102TU-L	5.08	2.54
2217R-103TU-L	7.62	5.08
2217R-104TU-L	10.16	7.62
2217R-105TU-L	12.70	10.16
2217R-106TU-L	15.24	12.70
2217R-107TU-L	17.78	15.24
2217R-108TU-L	20.32	17.78
2217R-109TU-L	22.86	20.32
2217R-110TU-L	25.40	22.86
2217R-111TU-L	27.94	25.40
2217R-112TU-L	30.48	27.94
2217R-113TU-L	33.02	30.48
2217R-114TU-L	35.56	33.02
2217R-115TU-L	38.10	35.56
2217R-116TU-L	40.64	38.10
2217R-117TU-L	43.18	40.64
2217R-118TU-L	45.72	43.18
2217R-119TU-L	48.26	45.72
2217R-120TU-L	50.80	48.26



Recommended P.C.B Layout(Top Side)
 (PCB BOARD TOLERANCE±0.05)



Part No.:2217R-1XXTU-L

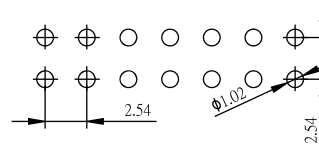
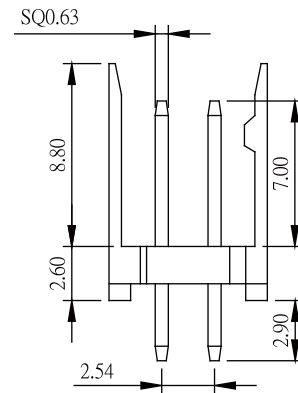
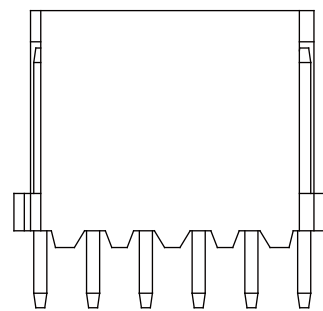
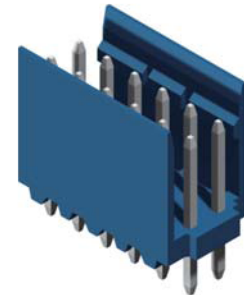
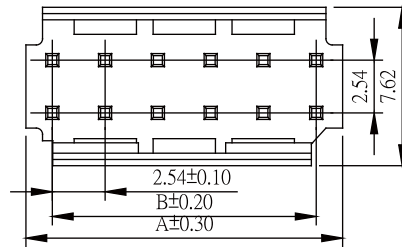


2.54mm Wafer Straight Type

Specifications

Current Rating: 3A AC,DC
 Voltage Rating: 250V AC,DC
 Temperature Range: -25°C to +105°C
 Contact Resistance: 20mΩ Max.
 Insulation Resistance: 1000MΩ Min.
 Withstanding Voltage: 1000V AC/minute
 Terminal: Brass / Gold or Tin Plated
 Material: Nylon 66,UL94V-0

Part No.	Dimensions	
	A	B
2217S-202TU-L	5.08	2.54
2217S-203TU-L	7.62	5.08
2217S-204TU-L	10.16	7.62
2217S-205TU-L	12.70	10.16
2217S-206TU-L	15.24	12.70
2217S-207TU-L	17.78	15.24
2217S-208TU-L	20.32	17.78
2217S-209TU-L	22.86	20.32
2217S-210TU-L	25.40	22.86
2217S-211TU-L	27.94	25.40
2217S-212TU-L	30.48	27.94
2217S-213TU-L	33.02	30.48
2217S-214TU-L	35.56	33.02
2217S-215TU-L	38.10	35.56
2217S-216TU-L	40.64	38.10
2217S-217TU-L	43.18	40.64
2217S-218TU-L	45.72	43.18
2217S-219TU-L	48.26	45.72
2217S-220TU-L	50.80	48.26



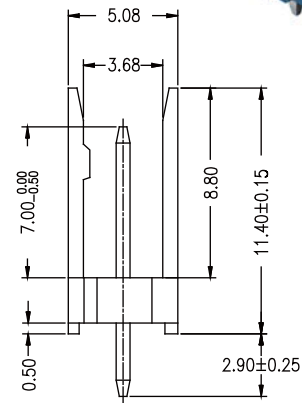
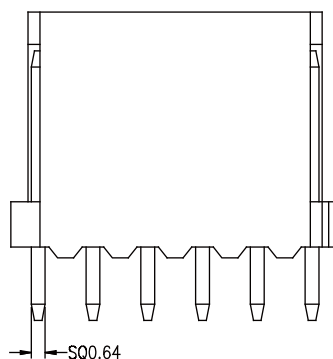
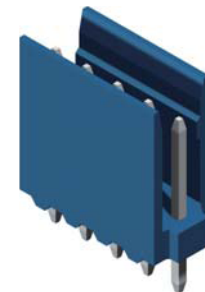
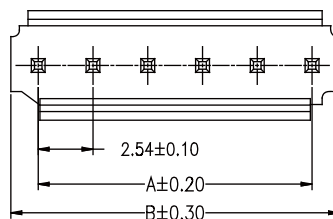
Recommended P.C.B Layout(Top Side)
 (PCB BOARD TOLERANCE±0.05)

Part No.:2217S-2XXTU-L

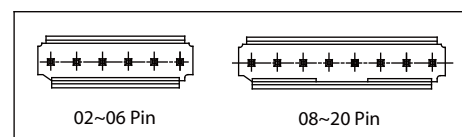
Specifications

Current Rating: 3A AC,DC
 Voltage Rating: 250V AC,DC
 Temperature Range: -25°C to +105°C
 Contact Resistance: 20mΩ Max.
 Insulation Resistance: 1000MΩ Min.
 Withstanding Voltage: 1000V AC/minute
 Terminal: Brass / Gold or Tin Plated
 Material: Nylon 66,UL94V-0

Part No.	Dimensions	
	A	B
2217S-102TU-L	5.08	2.54
2217S-103TU-L	7.62	5.08
2217S-104TU-L	10.16	7.62
2217S-105TU-L	12.70	10.16
2217S-106TU-L	15.24	12.70
2217S-107TU-L	17.78	15.24
2217S-108TU-L	20.32	17.78
2217S-110TU-L	25.40	22.86
2217S-112TU-L	30.48	27.94
2217S-113TU-L	33.02	30.48
2217S-115TU-L	38.10	35.56
2217S-117TU-L	43.18	40.64
2217S-118TU-L	45.72	43.18
2217S-120TU-L	50.80	48.26



Recommended P.C.B Layout(Top Side)
 (PCB BOARD TOLERANCE±0.05)



Part No.:2217S-1XXTU-L